



46, Bartholomew Gardens,
Hereford HR4 9DZ
£1,100 Per Calendar Month

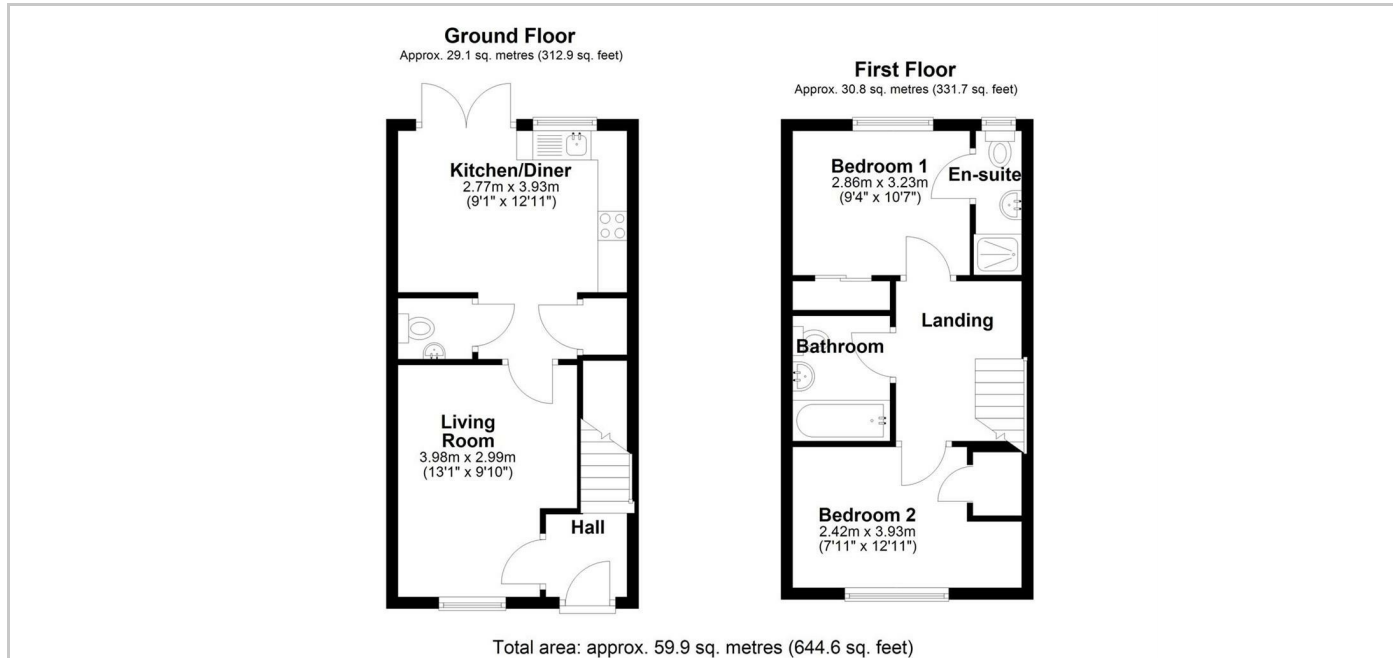
TO LET



PROPERTY SUMMARY

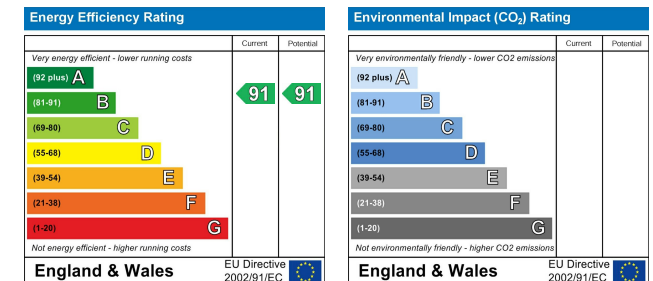
A newly built Crest home situated in the Holmer area of Hereford to the north of the city. The property comprises entrance hall, living room, cloakroom, kitchen/diner with fitted appliances, two double bedrooms, one with built in mirrored wardrobes and en-suite shower room, family bathroom, solar panels, uPVC double glazing ,rear garden with patio, lawn and shed and 2 allocated parking spaces.

NOTES & COMMENTS



DIRECTIONS

FEES



Brookes Bliss

These particulars are offered on the understanding that all negotiations are conducted through this company. Neither these particulars, nor oral representations, form part of any offer or contract, and their accuracy cannot be guaranteed.

46 Bridge Street, Hereford, Herefordshire HR4 9DG
Tel: 01432 343800
Lettings@brookes.bliss.co.uk

brookesbliss.co.uk

rightmove